



CINEMATRONICS SERVICE BULLETIN NO. 84-2

April 23, 1984

Subject: Modifying Early Cinematronics Main Logic, No  
Revision (80-12035-01), for use with LD-V1000

Many people have requested the information required to modify a Cinematronics Main Logic Board, designed for the PR-7820 Laser Disc Player (logic board serial number less than 6,000), so that it will drive an LD-V1000 Laser Disc Player. Printed on the reverse side of this sheet are the instructions for this modification.

The modification accomplishes two things. First, it rearranges the input to U-20 (74LS244). Secondly, it converts the ready line from an output to an input. The differences can be seen schematically by comparing the disc interface section of the revision E schematics and revision K schematics in your manual.

This modification requires revision E or F Dragon's Lair PROM's or any version of Space Ace PROM's. Additionally, a dipswitch must be set to the proper option when the game is powered up. Refer to the GAME SETTING OPTIONS for proper dipswitch settings. To reconnect board for use with PR-7820, replace wire marked  $\Delta$ , remove wire from J1 pin 2 to U14 pin 6 and change the dipswitch settings.

When Cinematronics ships a main board, it is configured as requested by the customer. However, it is always a good idea to check the board's configuration before installing it in a game. Please do not attempt this modification unless you have qualified technical personnel. ~~If you damage an assembly attempting to modify it, you will be required to pay full price for a replacement.~~

If you have any questions concerning this modification, please feel free to call Cinematronics' Technical Support at (619) 562-7000 in California or toll free (800) 854-2666 outside of California.

RSM/rlc

MAGICOM MAIN LOGIC SCHEMATIC REVISIONS

- A. Original release.
- B. R3: Was 1K; became 300.  
D0 on U20 incorrectly shown as Pin 8. Changed to Pin 18 on 6/23/83.
- C. Addition of capacitor C63, 220pf disc between U24, Pin 3 and ground. 6/27/83.
- D. C54: Was 0.001uf disc. Became 0.1uf disc on 6/29/83.  
C63: Was 220pf disc. Became 0.001uf disc on 6/29/83  
74LS244 inserted between 4MHz signal and U1 (280), Pin 6. U 17, Pins 13 and 7 used - these were formerly a spare gate. 6/29/83.
- E. C40, 0.01 disc tied between U22, Pin 2 and ground is deleted.  
74LS244 inserted between Q1 collector and U22, Pins 1 and 2. U17, Pins 11 and 9 used - these were formerly a spare gate.  
U1 (280), Pin 25 cut from U7 (MC68705P5), Pin 9.  
U1 (280), Pin 25 tied to R48 (new addition) 4.7K 1/4W 5% resistor. Other side of R48 tied to +5V.  
U18 (74LS245), Pin 19 cut from U7 (68705), Pin 14.  
U18, Pin 19 tied to +5V.  
U17 (74LS244), Pin 17 cut from U7, Pin 19.  
U17, Pin 17 tied to +5V.  
U23 (74LS244), Pin 1 cut from U22 (74LS00), Pin 11.  
U23, Pin 1 tied to ground.  
All of "E" above were effective on 7/8/83.
- F. Deletion of the following effective 7/8/83:
- U5 74LS244
  - U6 74LS393
  - U12 74LS244
  - U13 74LS393
  - U17 74LS244
  - U18 74LS245
- Substitute U23 for U17 (74LS244) for clock signal into 280 (U1, Pin 6 from U23, Pin 7) and reset signal into U22, Pins 1 and 2 from U23, Pin 9 effective 7/8/83.

- G. C63: Was 0.001uf disc. Became 470pf effective 9/5/83.
- H. Reset signal sent from U23, Pin 9 to U16, Pin 1 to cure false coin count on power up.
- I. Reference letter not used.
- J. Correct pin out for inputs on U20 (74LS244) effective 9/16/83.
- K. C63: Was 470pf disc; became 330pf disc.  
C17: Was 330pf mica; became 330pf disc.

Addition of U31 (74LS74) to divide clock.

Y1: Was 4.000MHz; became 16.000MHz.

U24: Was 74LS04; became 74S04.

Addition of R29 between U29, Pin 4 and C24.

Addition of R50 between U30, Pin 4 and C50.

These two additions allow option for U29 and 30 with the following components:

	<u>LM383</u>	<u>CA2002</u>
R49, R50	= 0 ohm jumper	2.2 ohm, 1/4W 5%
C24, C50	= 0.2 disc	0.1 disc

Addition of Jumper W1, when installed allows board to be used with Pioneer 7820 disc player with proper software. (F2) works with both 7820 & LD-01000

Deleted: U7 MC68705

Addition (reinstallation) U6, 74LS393

U13, 74LS393

U6, Pins 2 and 12, and U13, Pins 2 and 12 all grounds.

U6, Pin 6 tied to U26, Pin 11 (RTC).

U13, Pin 13 tied to U26, Pin 5 (GI CLK)

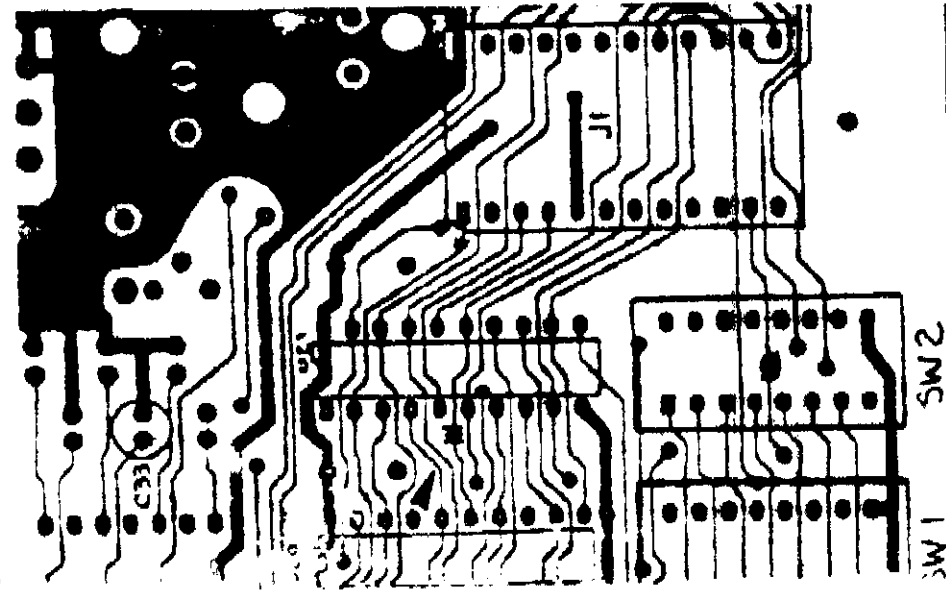
All of "K" above effective 10/10/83.

"K" revision schematic is for "C" revision printed circuit board used with LDV-1000 laser disc player.

THIS IS A ...

SOLDER SIDE

CONVERSION  
 EARLY STARCOM MAIN LOGIC, NO REVISION (80-12035-01)  
 FOR USE WITH  
 PIONEER LD01000 LASER DISC PLAYER



COMPONENT SIDE:

- REMOVE R33 (220 Ω, 1/4W)
- REMOVE C33 (1μF, ELECT. RAD)
- ETCH CUT (REFERENCE  $\blacktriangleright$ ) BETWEEN U20 AND U21 NEAR U21 PINS, TRACE CONNECTS TO U20 PINS

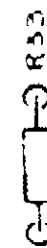
SOLDER SIDE:

- DELETE WIRE (REFERENCE  $\triangle$ ) FROM J1 PIN 2 TO FEEDTHROUGH MAKE 5 ETCH CUTS (REF.  $\blacktriangleright$ ) WIRE (REF.  $\square$ ) FROM J1 PIN 10 TO U21 PIN 5 WILL HAVE TO BE MOVED ONTO PIN 5 IF CONNECTED TO FEEDTHROUGH

ADD 7 WIRES

- $\leftarrow$  EXISTING WIRE
- $\rightarrow$  ADDED WIRE

J1	PIN 2	to	U21	PIN 6
U20	PIN 4	to	U21	PIN 5
U20	PIN 6	to	U21	PIN 6
U20	PIN 8	to	U21	PIN 9
U20	PIN 13	to	U21	PIN 15
U20	PIN 15	to	U21	PIN 16
OR FEEDTHROUGH AS SHOWN				
U20	PIN 17	to	U21	PIN 19



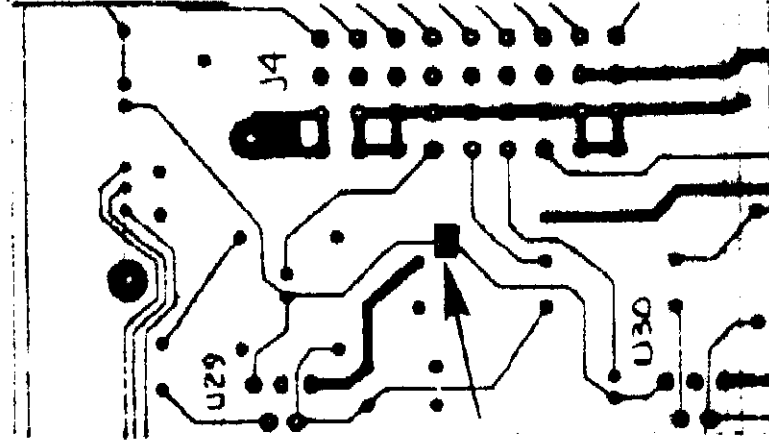
COMPONENT SIDE

SW1 SW2

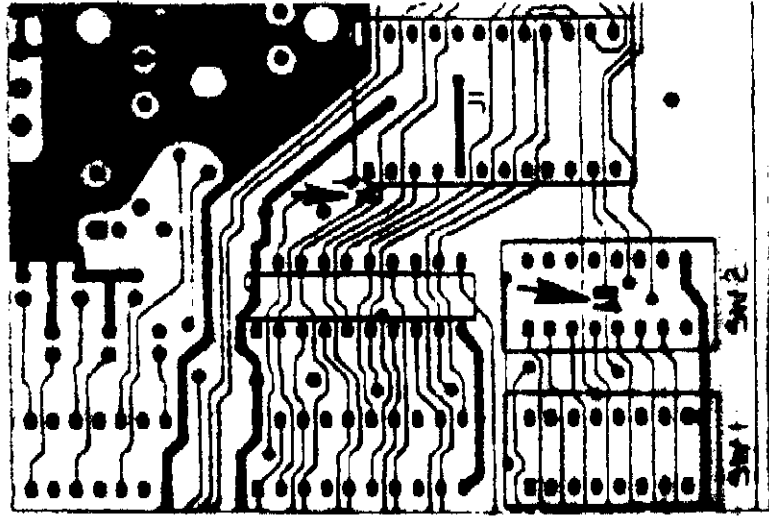
TRACE CUTS AND WIRE ADDS  
STARCOM MAIN LOGIC

BO-12055-02 SHEET 1 OF 1  
REV C SCALE 2 TO 1

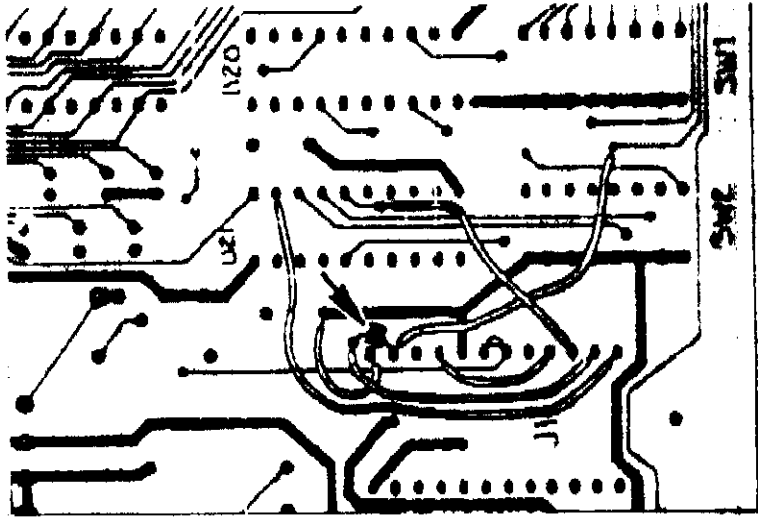
DATE ~~REV~~ 17 JUNE 1983  
AUDIO AMP MOD  
CONN. J1 MOD



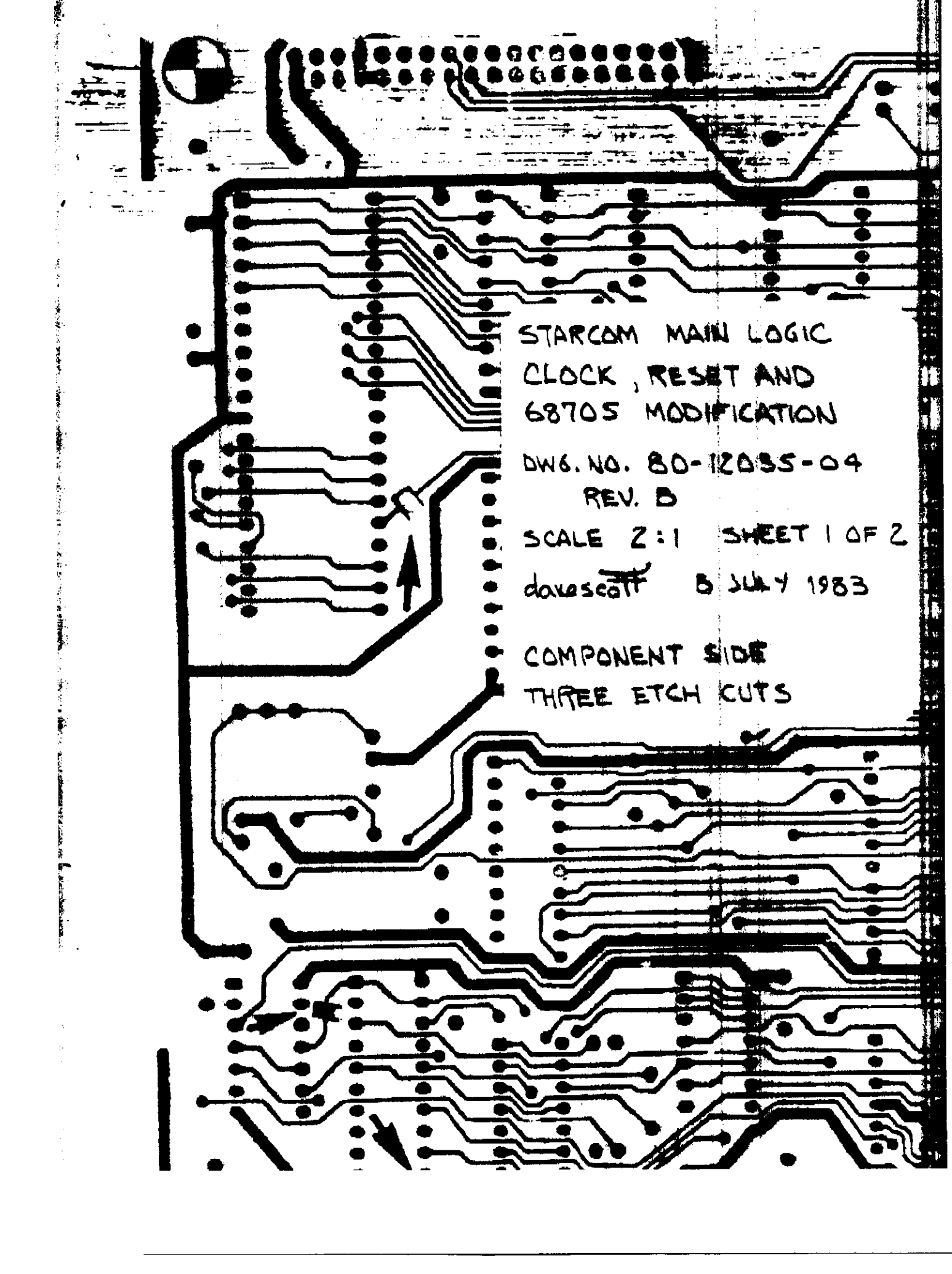
ETCH CUT BETWEEN  
PINS U29 AND PIN 1 U30  
SOLDER SIDE



TWO ETCH CUTS ON COMPONENT SIDE  
ONE NEAR J1 PIN 1  
ONE AT SW2, MIDDLE



ETCH CUT ON SOLDER SIDE NEAR  
J1 PIN 1  
ADD SEVEN WIRES AT J1



STARCOM MAIN LOGIC  
CLOCK, RESET AND  
68705 MODIFICATION

DWG. NO. 80-12035-04

REV. B

SCALE 2:1 SHEET 1 OF 2

davescott 8 JULY 1983

COMPONENT SIDE  
THREE ETCH CUTS

STARCOM MAIN LOGIC  
CLOCK, RESET AND  
68705 MODIFICATION

DWG. NO. 80-12035-04 REV B  
SCALE 2:1 SHEET 2 OF 2  
davescott 8 JULY 1983  
SOLDER SIDE

FOUR ETCH CUTS, SIX WIRE ADDS  
ADD RESISTOR 4.7K, 1/4W, 5%  
BETWEEN U1 PINS 11 AND 25  
PLACE SLEEVING AROUND  
LEAD TO PIN 25

U16

COIN COUNTER POWER UP FIX  
TWO ETCH CUTS AT U16 PIN 1  
JUMPER TO RE-CONNECT TRACE  
AROUND U16 PIN 1  
JUMPER FROM U16 PIN 1  
TO U22 PIN 1

U28